

Maatiin akkamitti ofeeguu danda'a?

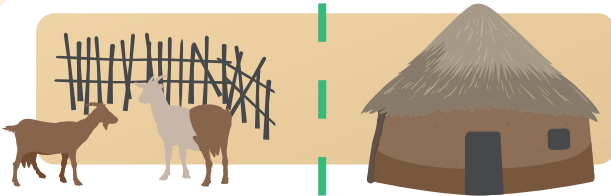
- ✓ Beeylada erga tuqxe booda harkaa dhiqadhu



- ✓ Aannan danfisuun dhugi



- ✓ Kutaa namnifi beeyladaa adda baasi



- ✗ Mucaan kosii beeyladaa irraa akka taphatu hin eeyyamiin



- ✗ Beeylada tasa du'e hintuqiin



Qorattoonni beekumsa keenya kabajanii nu wajjin barachuuf as jiru. Gaaffii keessan isaan gaafadhaa.



FUNDERS



ZAFI PARTNERS



This message is brought to you by the ZAFI project, which is supported by the NIHR using international development funds from the UK Government. The views expressed are those of the researchers, not the UK Government.



Dhukkubbunii Zoonotic Maali?

Dhukkuba Beeylada Irraa Dhufu.

Akkamitti dhufa?

> Beeylada tutuqu



> Bishaan hin hindanfiin dhuguu



> Kosii beeyladaa irratti tapahachuu



> Aannan hindanfiin dhuguu

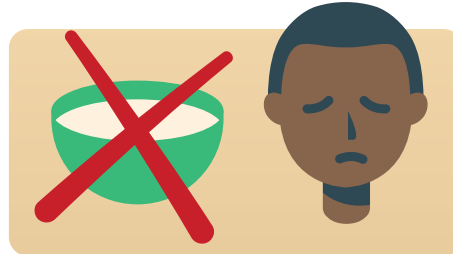


Mallattoolee maal fa'i?

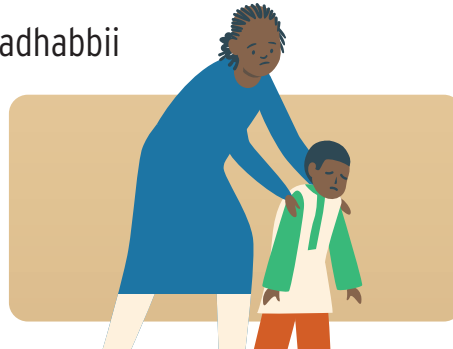
> Qaama ho'a cimaa



> Nyaachuu dhabuu



> Dadhabbii



> Hollachuudhan duubatti kufuu



Maal haa goonu?

> Mucaa kee **guyyaa tokkotti** buufata fayyaa geessi

