

OUR COMMUNITY, OUR HEALTH



FUNDERS



ZAFI PARTNERS





OUR COMMUNITY, OUR HEALTH

- What do you see in this picture?
What is healthy about our community?
- Where do we see animals in our daily life?
How do we interact with them?
- What are the strengths of our community
that help us stay healthy?

FUNDERS



ZAFI PARTNERS



UNDERSTANDING FEVER



FUNDERS



ZAFI PARTNERS





UNDERSTANDING FEVER

- When a child gets a hot body, what do we think causes it?
- What is the first thing we usually do? Who do we talk to?
- What do we call different kinds of fever?

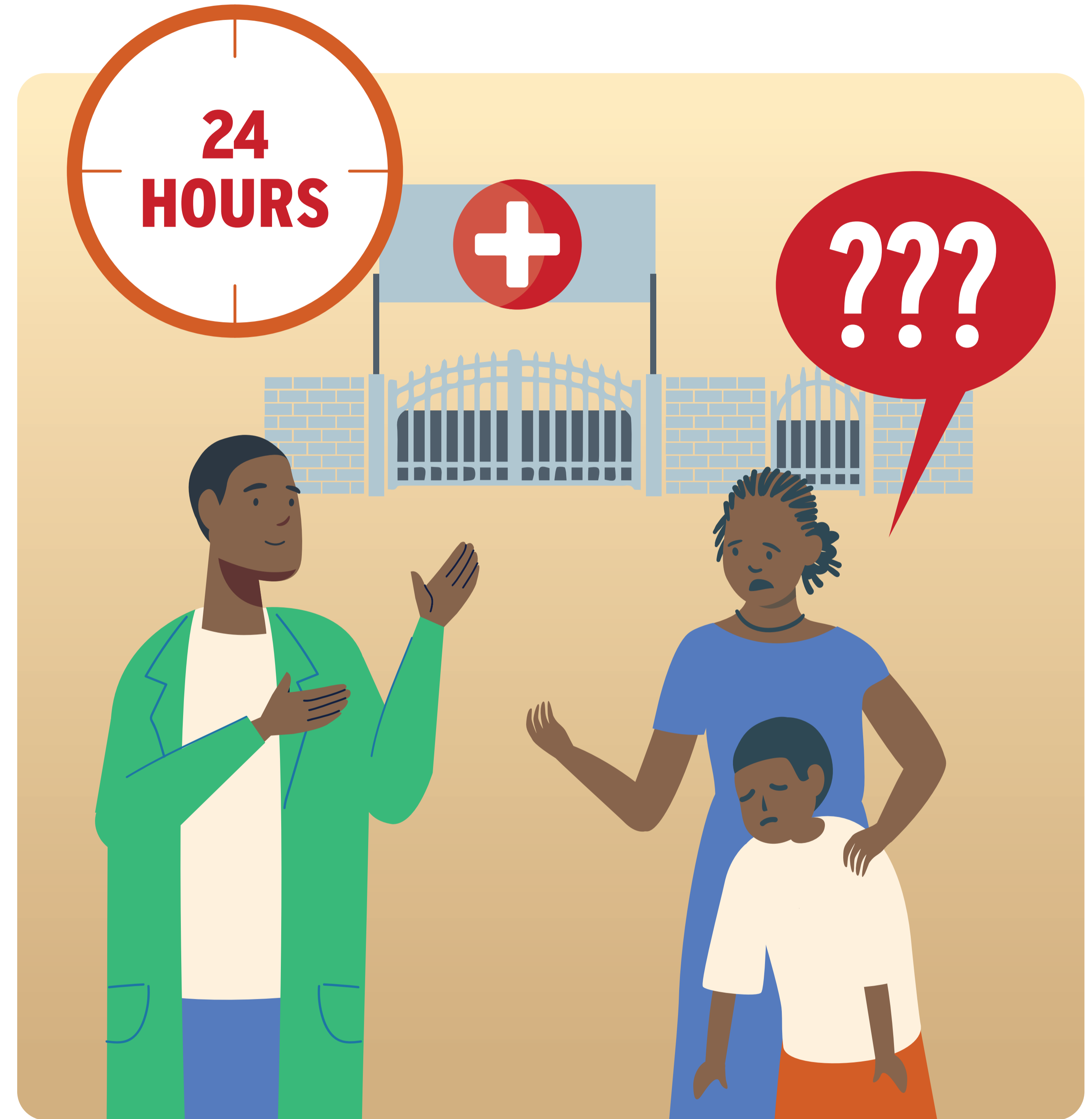
FUNDERS



ZAFI PARTNERS



ACTING FAST—WITHIN 24 HOURS



FUNDERS



ZAFI PARTNERS



ACTING FAST—WITHIN 24 HOURS

- What makes it hard to go to the clinic or health worker right away?
- What helps us decide it is time to go?
- The message says act within one day. Why do you think one day is important?

FUNDERS



ZAFI PARTNERS





WORKING TOGETHER FOR HEALTHY FAMILIES



FUNDERS



ZAFI PARTNERS



This message is brought to you by the ZAFI project, which is supported by the NIHR using international development funds from the UK Government. The views expressed are those of the researchers, not the UK Government.



WORKING TOGETHER FOR HEALTHY FAMILIES

- What do you see happening in this picture?
- Researchers are here to learn with us. What questions do you have for them?
- How can we work together to keep our children and our animals healthy?

FUNDERS



ZAFI PARTNERS

